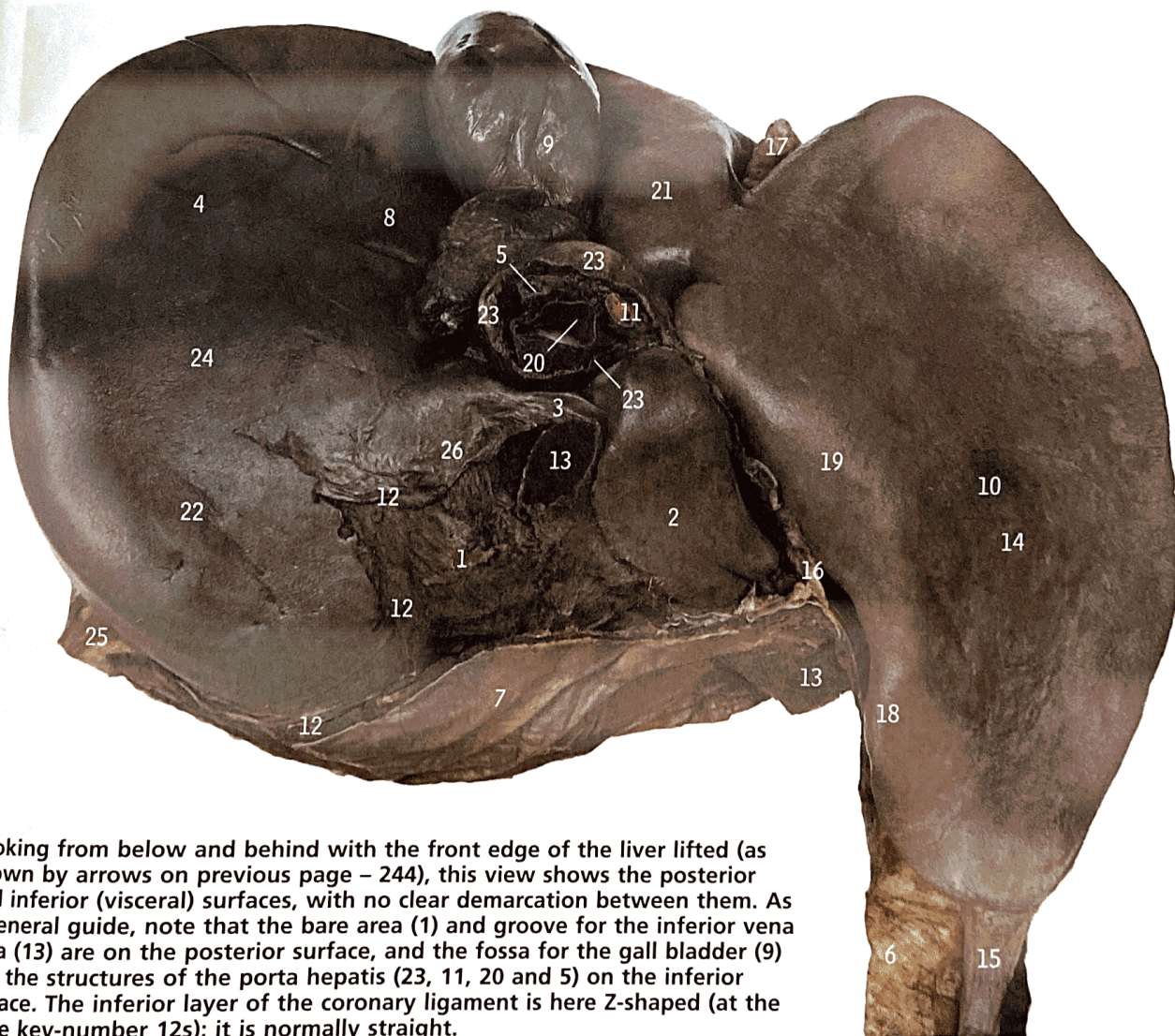


Liver from below and behind



Looking from below and behind with the front edge of the liver lifted (as shown by arrows on previous page – 244), this view shows the posterior and inferior (visceral) surfaces, with no clear demarcation between them. As a general guide, note that the bare area (1) and groove for the inferior vena cava (13) are on the posterior surface, and the fossa for the gall bladder (9) and the structures of the porta hepatis (23, 11, 20 and 5) on the inferior surface. The inferior layer of the coronary ligament is here Z-shaped (at the three key-number 12s); it is normally straight.

- 1 Bare area
- 2 Caudate lobe
- 3 Caudate process
- 4 Colic impression
- 5 Common hepatic duct
- 6 Diaphragm
- 7 Diaphragm on part of bare area (obstructing view of superior layer of coronary ligament)
- 8 Duodenal impression
- 9 Gall bladder
- 10 Gastric impression
- 11 Hepatic artery
- 12 Inferior layer of coronary ligament
- 13 Inferior vena cava
- 14 Left lobe
- 15 Left triangular ligament
- 16 Lesser omentum in fissure for ligamentum venosum
- 17 Ligamentum teres and falciform ligament in fissure for ligamentum teres
- 18 Oesophageal groove
- 19 Omental tuberosity
- 20 Portal vein
- 21 Quadrate lobe
- 22 Renal impression
- 23 Right free margin of lesser omentum in porta hepatis
- 24 Right lobe
- 25 Right triangular ligament
- 26 Suprarenal impression

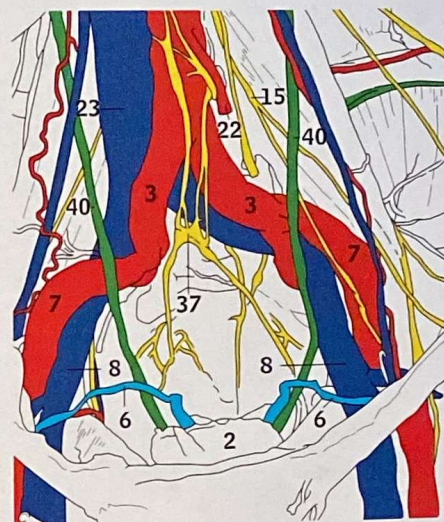
The caudate (2) and quadrate (21) lobes are classified anatomically as part of the right lobe (24), but functionally they belong to the left lobe (14), since they receive blood from the left branches of the hepatic artery and portal vein, and drain bile to the left hepatic duct.



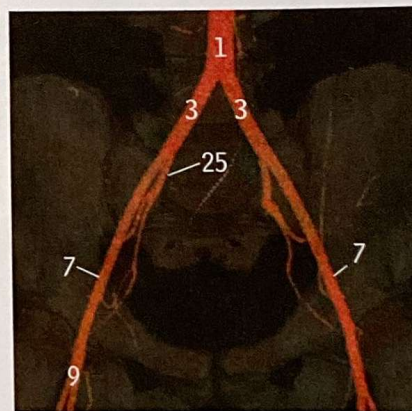
posterior abdominal and pelvic walls



All peritoneum and viscera (except for the bladder, 2, ureter, 40, and ductus deferens or vas deferens, 6) have been removed, to display vessels and nerves.



Pelvic arteriogram



- 1 Aorta and aortic plexus
- 2 Bladder
- 3 Common iliac artery
- 4 Common iliac vein
- 5 Deep circumflex iliac artery
- 6 Ductus deferens
- 7 External iliac artery
- 8 External iliac vein
- 9 Femoral artery
- 10 Femoral branch of genitofemoral nerve
- 11 Femoral nerve
- 12 Femoral vein
- 13 Fourth lumbar artery
- 14 Genital branch of genitofemoral nerve
- 15 Genitofemoral nerve

- 16 Hypogastric nerve
- 17 Iliacus and branches from femoral nerve and iliolumbar artery
- 18 Iliohypogastric nerve
- 19 Ilio-inguinal nerve
- 20 Iliolumbar ligament
- 21 Inferior hypogastric (pelvic) plexus and pelvic splanchnic nerves
- 22 Inferior mesenteric artery and plexus
- 23 Inferior vena cava
- 24 Inguinal ligament
- 25 Internal iliac artery
- 26 Lacunar ligament
- 27 Lateral femoral cutaneous nerve arising from femoral nerve

- 28 Lumbar part of thoracolumbar fascia
- 29 Obturator nerve and vessels
- 30 Pectineal ligament
- 31 Position of femoral canal
- 32 Psoas major
- 33 Quadratus lumborum
- 34 Rectum (cut edge)
- 35 Rectus abdominis
- 36 Spermatic cord
- 37 Superior hypogastric plexus
- 38 Sympathetic trunk and ganglia
- 39 Testicular vessels
- 40 Ureter

